



WASTING TIME AND MAKING ERRORS IS HUMAN. AUTOMATION RULES.

ASSURE TEST DATA INTEGRITY

Assure Test Data Integrity for HP Quality Center

HP Software Gold Business Partner 

- An effective testing framework for HP QC
- Automates data entry and reduces human error
- Speeds up the daily work of testers by automating the defect process
- Enables effective and precise test planning
- Enables in-depth reporting on test execution results
- Reduces duplication and increases reuse of your Test Assets
- Improves the quality and reliability of your Test Data

THE CHALLENGE

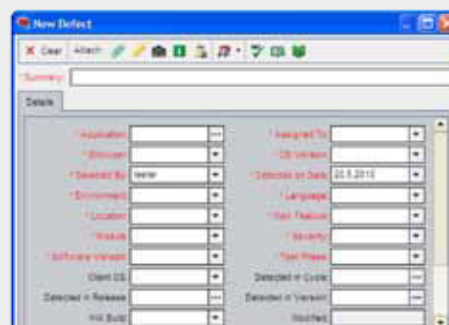
HP QC's Defect module acts as a gateway between Testers and Developers, enabling you to produce exhaustive error reports. However, Quality Center's Defect entry forms can often become complex, with many mandatory fields that the tester must fill in.

Due to the amount of work needed to create a new Defect, testers may hesitate to create a defect, which may result in some errors going unnoticed. In many cases, the data entry might not be accurate as the Tester may not be familiar with the fields.

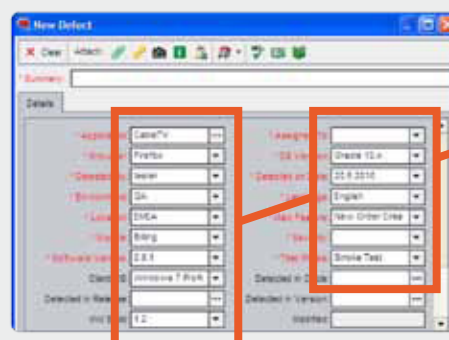
How do you capture as much data as possible, while keeping the tool lean and unobtrusive to the user?

THE SOLUTION

Assure Test Data Integrity is a testing framework for HP Quality Center. By automating and enhancing key phases of the testing process, such as Test Set management and Defects entry, Assure Test Data Integrity improves the quality and reliability of your Test Data.



Out-of-the-box QC

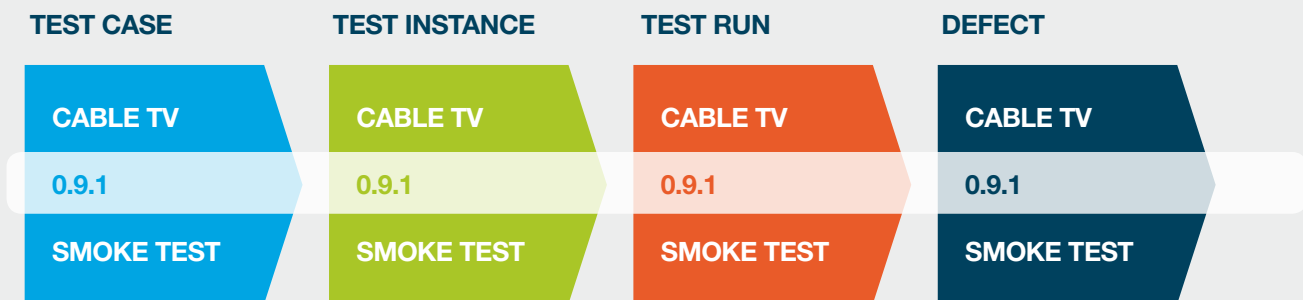


Automatic data entry by Assure Test Data Integrity

AUTO-FILL

How it Works

Assure Test Data Integrity makes it possible to reuse data throughout the entire HP QC project. The data is entered once, and is automatically copied to other QC entities, such as Test Instances, Test Runs and Defects as part of the normal testing process. When entering a new Defect, the most important data is already filled in for the Tester.



Key Features:

Automate the Defect Creation Process

When a tester begins to enter a new Defect, Assure Test Data Integrity populates the Defect form with the most important key values and information. Instead of having to fill in a large amount of fields that the Tester may not even understand, they can focus on filling in the most relevant information.

Unobtrusive to the User

Test Data Integrity works behind-the-scenes with minimal user interaction.

Improve the Reliability of Your Defect Data

Entering wrong information into a Defect may have a severe impact. By automatically filling in most of the Defect fields, testers are less likely to make mistakes in filling in the Defect form.

Save Time

Save the time of the entire QA team. Test Managers spend less time managing their Test Sets. Testers spend less time entering Defects. Developers can work faster as the Defects data is more reliable which helps them find the problem much faster.

Govern the Test Execution

Make sure your testers have all the information they need to execute the test cases as planned by the Test Managers.

Improved Reporting

Assure Test Data Integrity makes sure every test run contains the execution variables at the time of execution. This enables you to achieve comprehensive reports on your Test Executions, e.g. Showing maturity of your Requirements based on different execution variables.

ABOUT ASSURE

Assure provides innovative products and solutions for HP Quality Center customers. Using our solutions companies can achieve a standardized and enhanced use of HP Quality Center while lowering the TCO. Our growing partner network enables us to offer our solutions globally.

ASSURE PRODUCTS FOR HP QC

- Project Harmonizer
- Admin Console
- TrashBin
- **Test Data Integrity**
- OverDrive
- TotalView

CONTACT INFORMATION

For additional information, e-mail: sales@testpro-int.com our site: www.testpro-int.com

testpro
the professional effect

official UK distributor of Assure products